

# Available *now.*

12140 Suffolk Terrace, Gaithersburg, MD 20878

\$375,000

## Property Details

3 Bedrooms

2 Bathrooms

Style: Rancher Subdivision:

Quince Orchard Valley

Square Feet:

1,000 approx. (main level)

1,000 approx. (lower level)

Walk-out Finished Basement

Attached Carport

High Efficiency HVAC system

Water: Public

Sewer: Public

Wood-Burning Fireplace Insert



## Andy Roberts

Roberts Real Estate LLC  
14708 Old Columbia Pike  
Burtonsville, MD 20866

Direct 301.717.8485

andy@robertsrealestateteam.com  
www.robertsrealestateteam.com



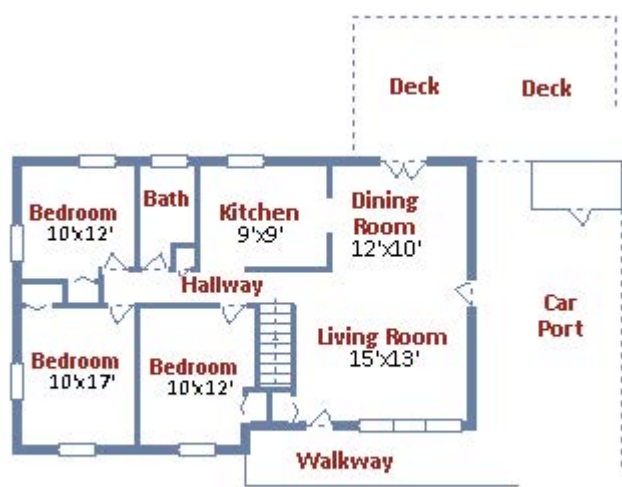
Information has not been verified, is not guaranteed, and is subject to change.



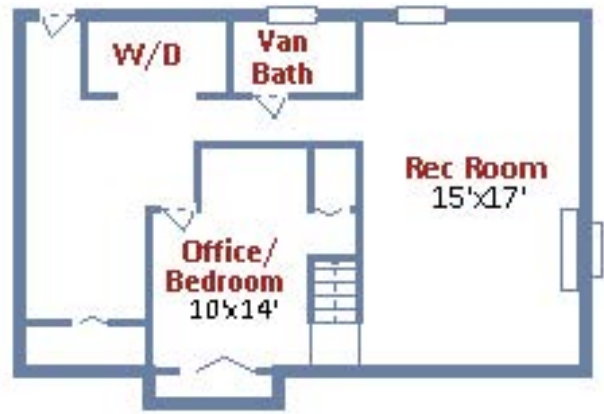


This single family, detached home resides on a 1/4 acre lot with a generous driveway and carport for off-street parking. The backyard features a large deck overlooking a park-like setting and trees. Freshly painted throughout, it features beautifully maintained hardwood floors on the main level, double pane vinyl windows, and stainless steel appliances in the updated kitchen. For those interested in energy conservation, a high efficiency HVAC system and front loading washer and dryer are located in the walk-out level basement. The family room includes a wood-burning fireplace insert in the basement as well. Located in a quiet suburb, this home is close to Kentlands/Lakelands shopping and I-270 and the ICC for easy commuting. Close to local schools and parks, this is an opportunity you don't want to miss!

### 12140 Suffolk Terrace Floor Plan



Copyright © TruPlace, Inc.  
**Main Level**



Copyright © TruPlace, Inc.  
**Lower Level**



Information has not been verified, is not guaranteed, and is subject to change.

